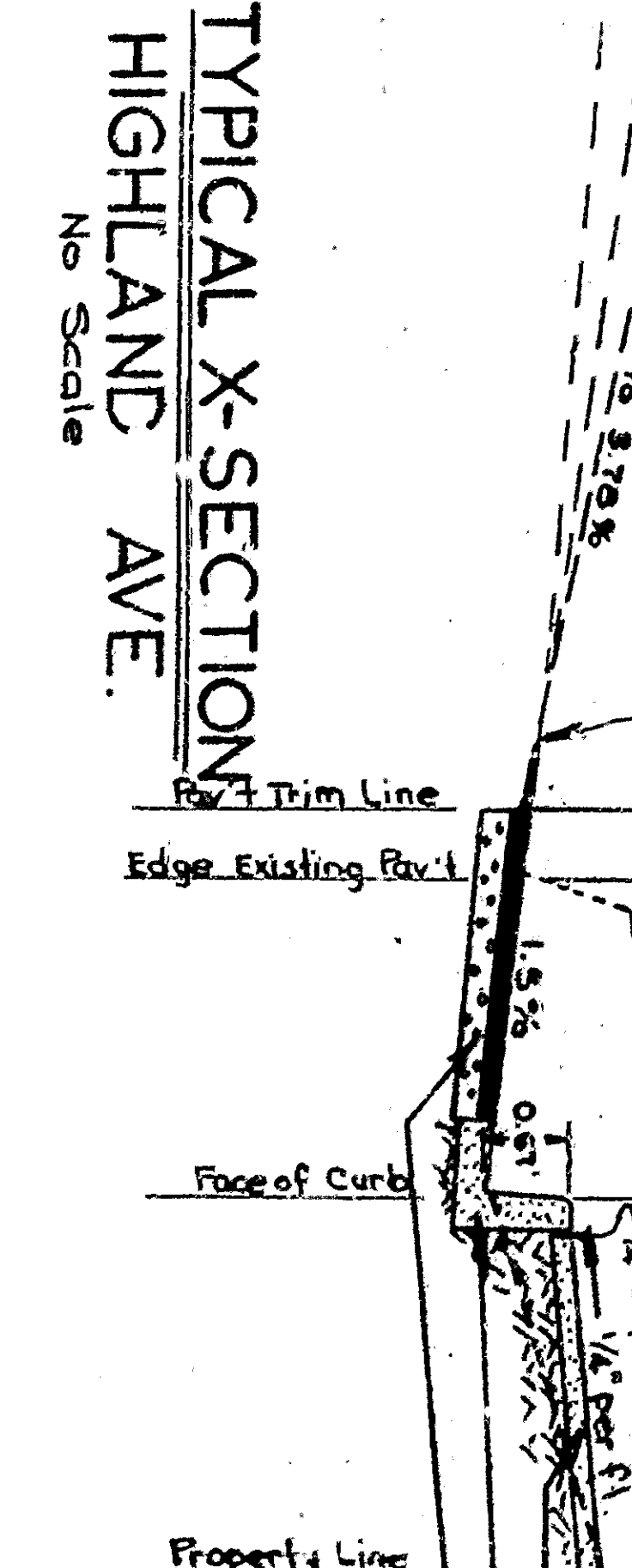
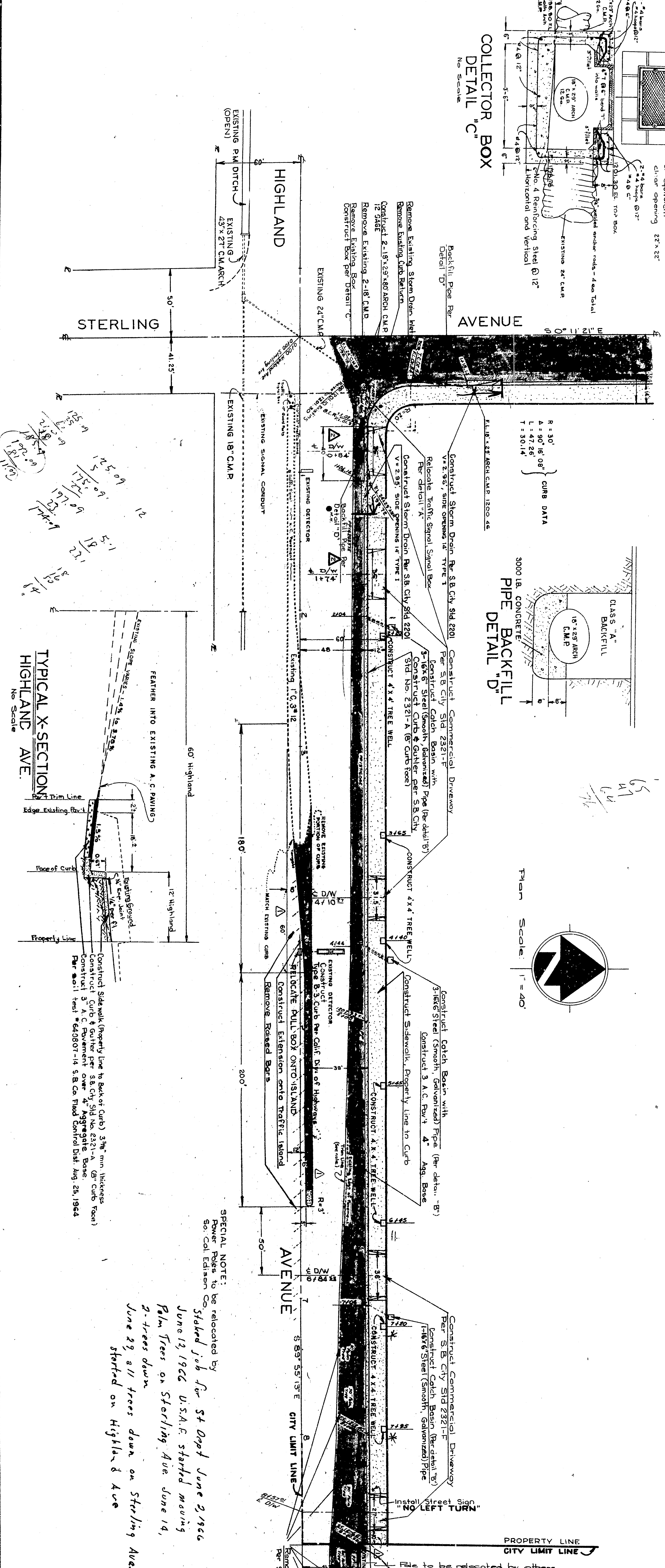
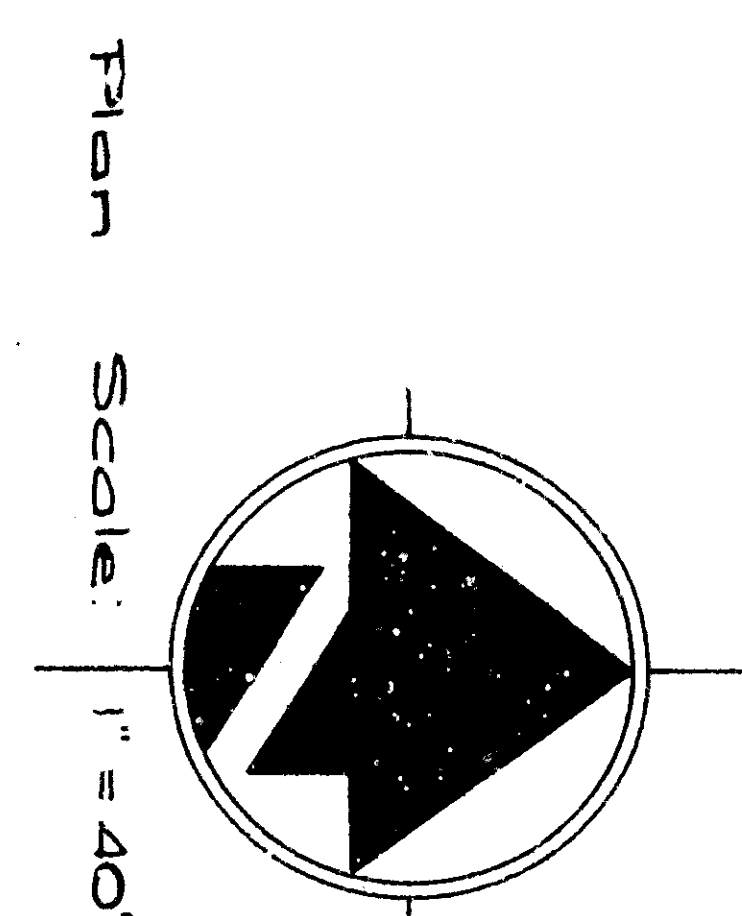
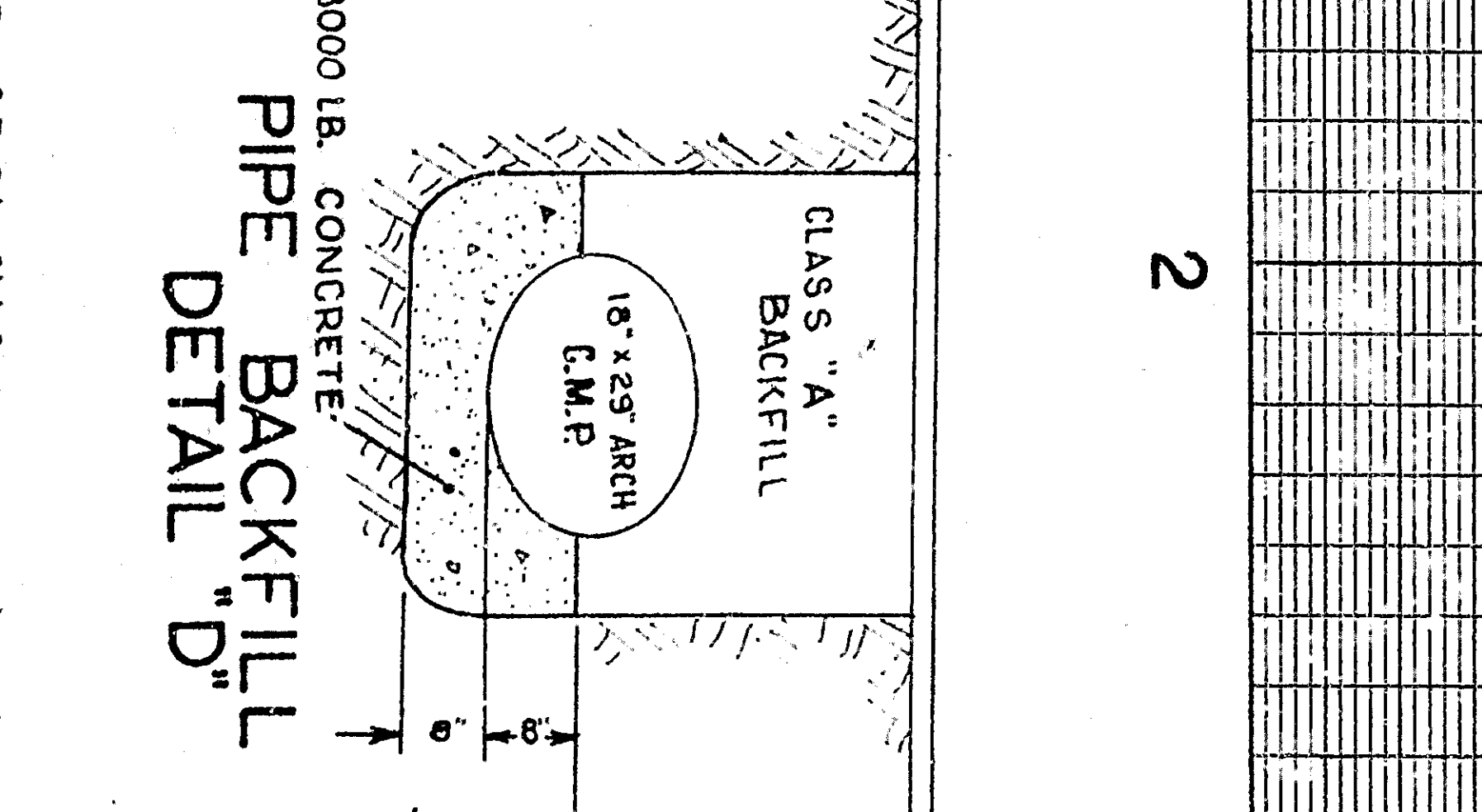
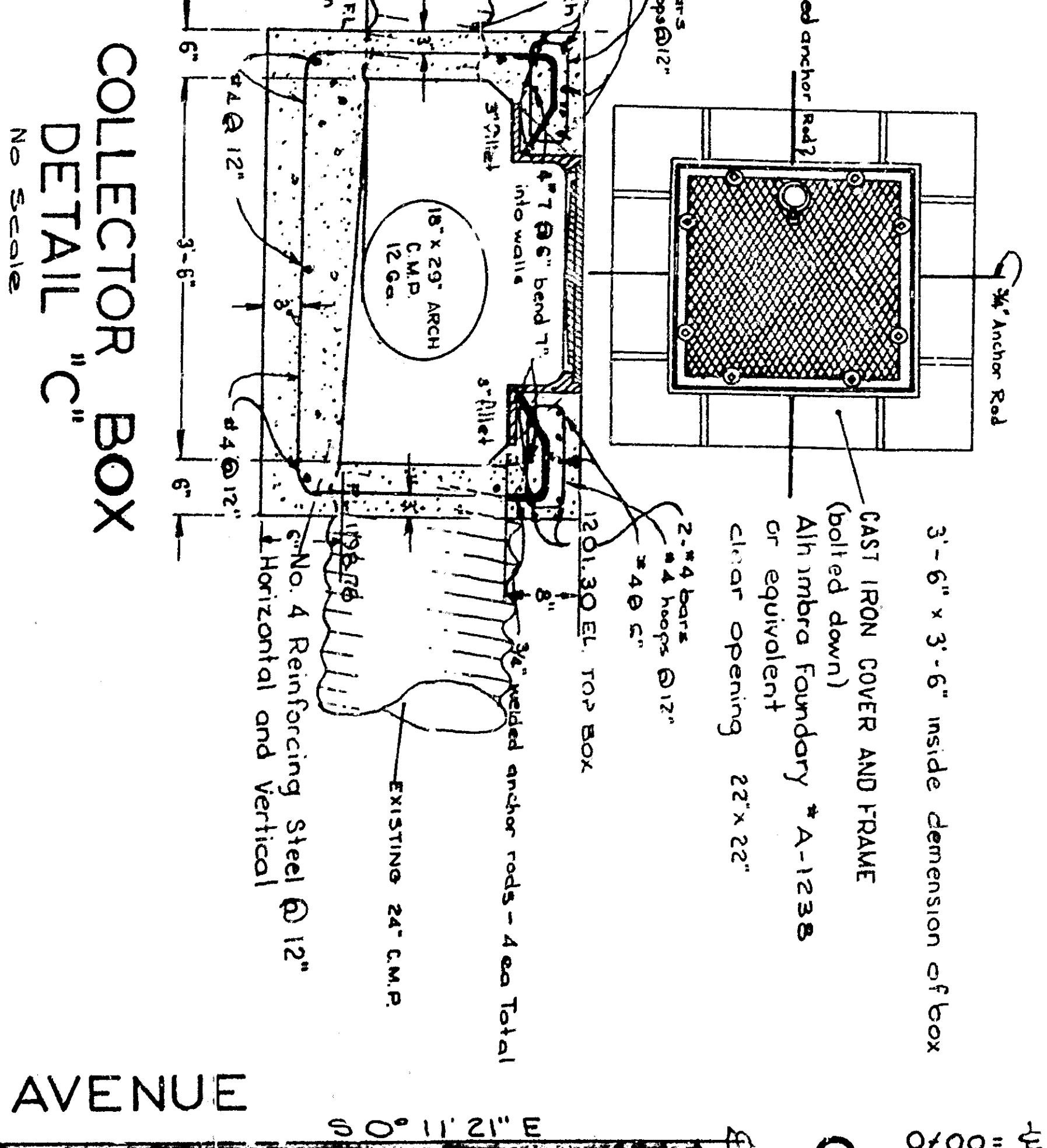
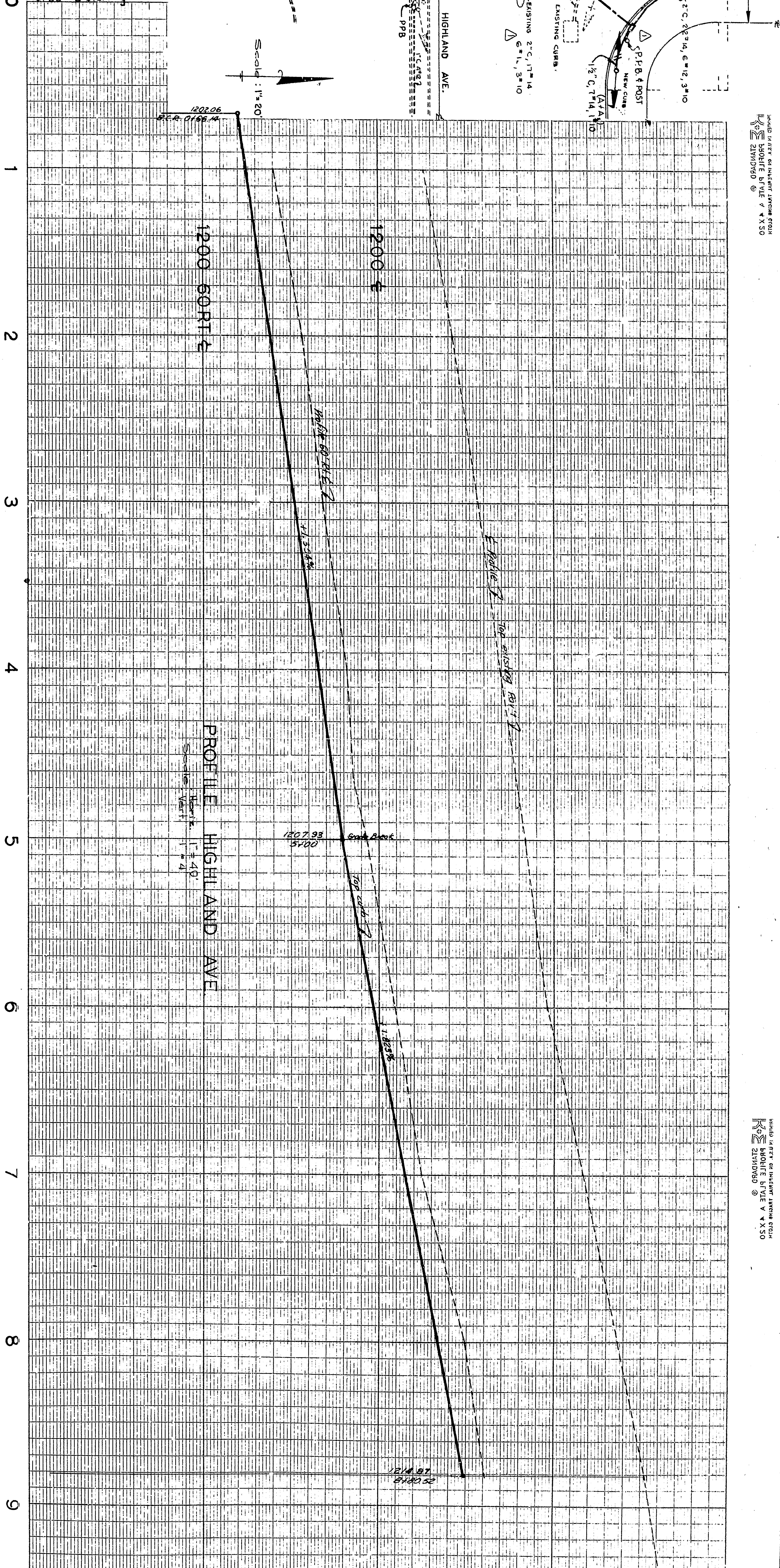
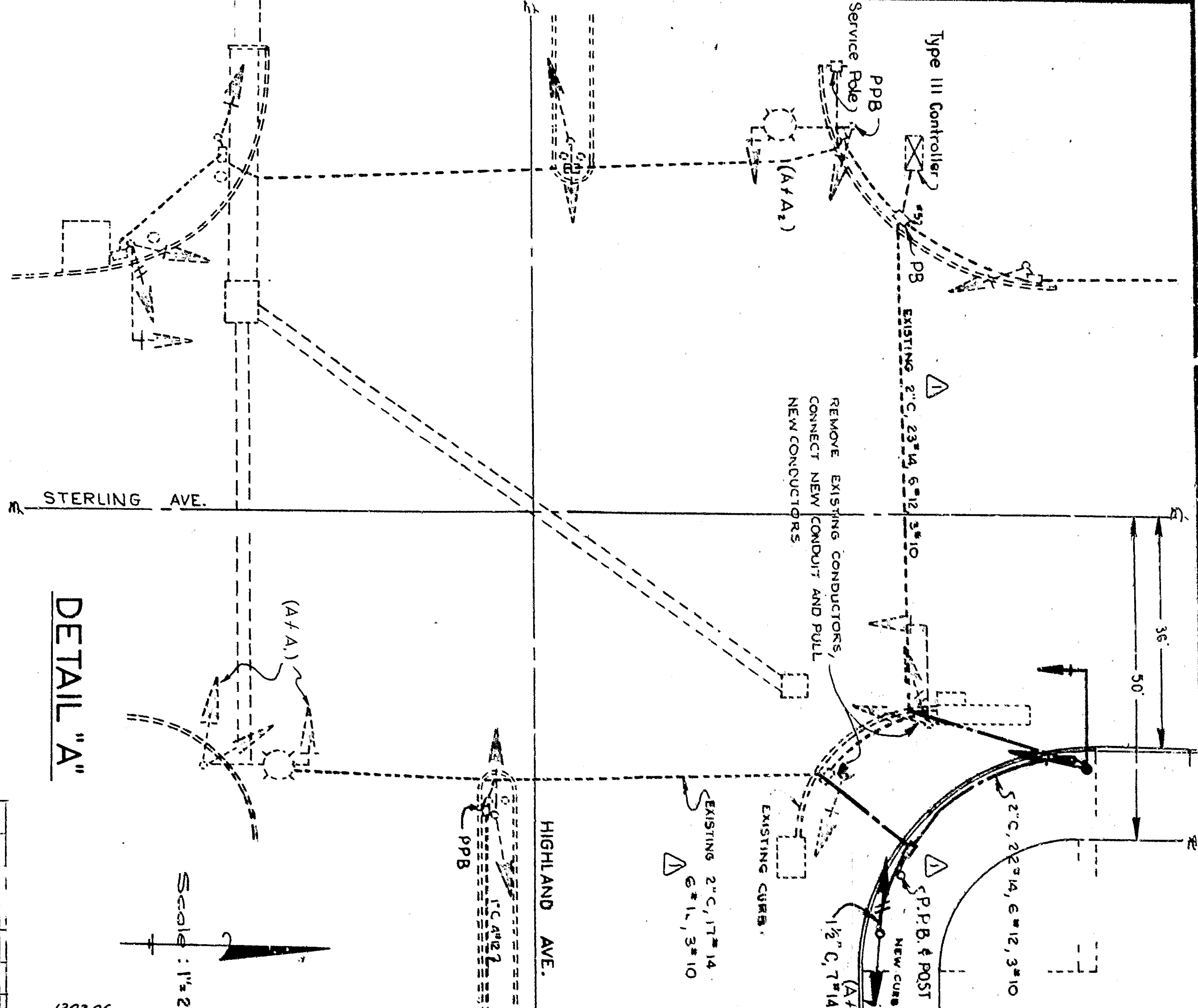


RELOCATION OF TRAFFIC SIGNALS
 NE CORNER OF HIGHLAND & STERLING AVENUES
 (See Note 11/28/61 (AS BUILT) for details of 1954-55 work)



IMPROVEMENT PLAN & PROFILE
HIGHLAND AVENUE
 STERLING AVENUE

CITY OF SAN BERNARDINO
 DEPARTMENT OF ENGINEERING
 DRAWING NO. 33389
 SHEET 1 OF 2 SHEETS

APPROVED BY: [Signature]
 DRAWN BY: [Signature]
 CHECKED BY: [Signature]

DATE: 1964
 PROJECT: Highland Avenue Improvement
 DRAWING NO. 33389
 SHEET 1 OF 2 SHEETS

382 C148
 7473
 Dean Carter

ONSITE CATCH BASIN
 DETAIL "B"
 call check ESBK water for Sta. 190
 99501

PROPERTY LINE
 CITY LIMIT LINE

SPECIAL NOTE:
 to be relocated by others

GENERAL NOTES
 1. All work to be accomplished as shown on these plans shall be done in conformity with applicable provisions of Standard Specification No. 2271, revised Nov. 1964, and applicable Standard Drawing No. 2321 on file in the office of the S.B. City Engineer.
 2. From edge of existing pavement where new paving joints existing pavement to a clean, straight line. Construct match up overlay paving as directed in the field so as to produce a smooth transition from existing to new pavement.
 3. Basis of existing: Base, Top of the 2 1/2\"/>

4. Basis of Bearing: Centerline of Ramona St. Per Tract No. 4890 MB 58/97 take as N 89° 51' 43\"/>

5. All work shall conform to State of Calif. Division of Highways Encroachment Permit No. 102988 on file in the office of the City Engineer.

June 19, 1964 USAEC staffed moving Palm Trees on Sterling Ave June 19, 2 trees down
 June 29 all trees down on Sterling Ave started on Highland Ave

Staked job for St Dept June 2, 1964
 Started June 19, 1964 USAEC staffed moving Palm Trees on Sterling Ave June 19, 2 trees down
 June 29 all trees down on Sterling Ave started on Highland Ave

Staked job for St Dept June 2, 1964
 Started June 19, 1964 USAEC staffed moving Palm Trees on Sterling Ave June 19, 2 trees down
 June 29 all trees down on Sterling Ave started on Highland Ave

Staked job for St Dept June 2, 1964
 Started June 19, 1964 USAEC staffed moving Palm Trees on Sterling Ave June 19, 2 trees down
 June 29 all trees down on Sterling Ave started on Highland Ave

Staked job for St Dept June 2, 1964
 Started June 19, 1964 USAEC staffed moving Palm Trees on Sterling Ave June 19, 2 trees down
 June 29 all trees down on Sterling Ave started on Highland Ave

Staked job for St Dept June 2, 1964
 Started June 19, 1964 USAEC staffed moving Palm Trees on Sterling Ave June 19, 2 trees down
 June 29 all trees down on Sterling Ave started on Highland Ave

Staked job for St Dept June 2, 1964
 Started June 19, 1964 USAEC staffed moving Palm Trees on Sterling Ave June 19, 2 trees down
 June 29 all trees down on Sterling Ave started on Highland Ave